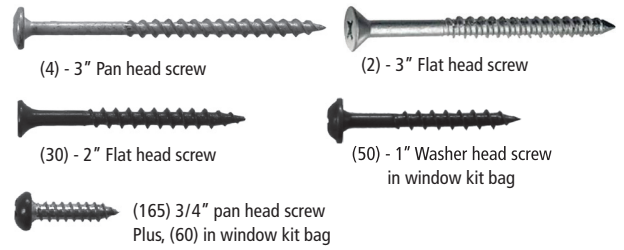




# 4X6 HUNTING BLIND

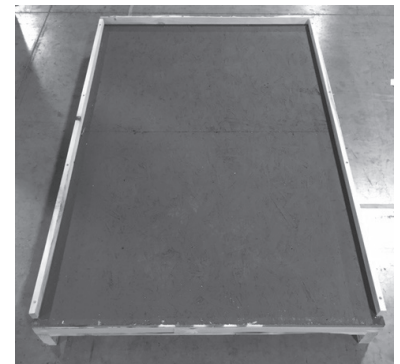
## Assembly Instructions

**Tools Needed:** Tin Snips • Cordless Drill • #2 Square Drive Bit • Tape Measure • Caulk Gun • 3/8" Staple Gun • Hammer • Marker



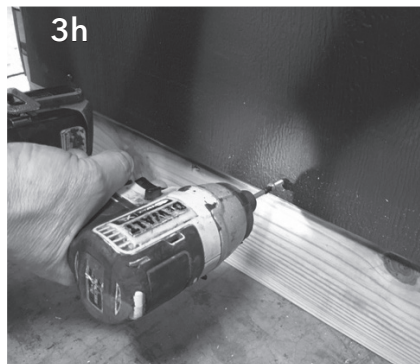
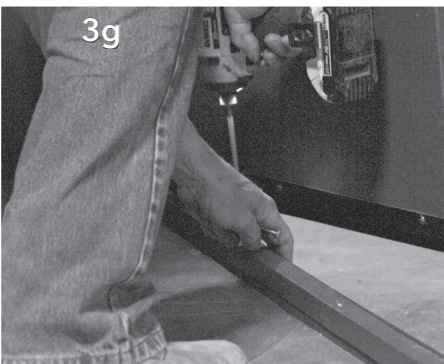
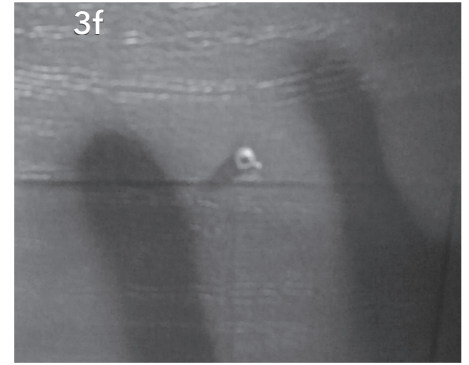
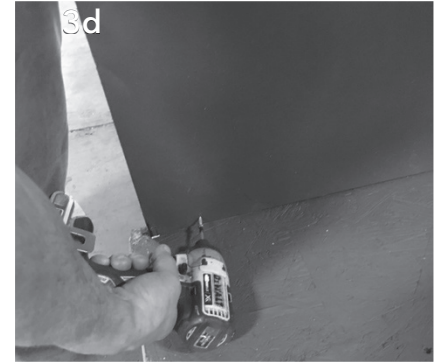
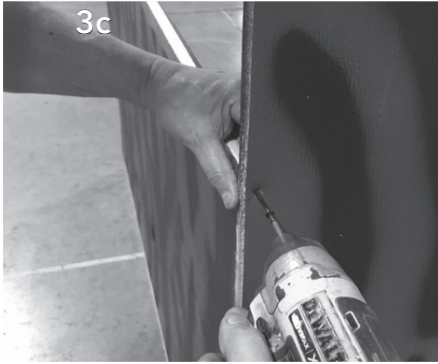
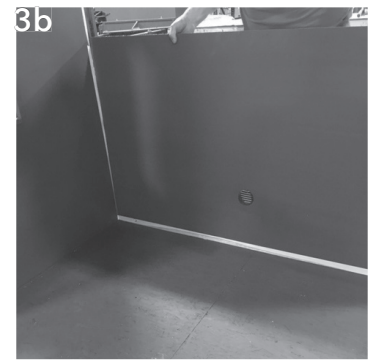
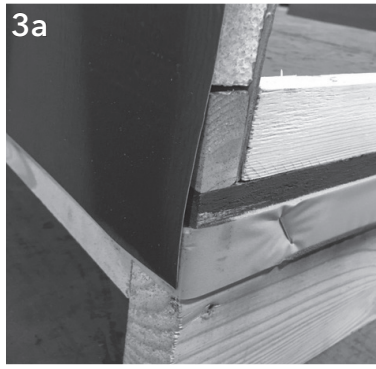
### Step 1 - Disassemble shipping container:

Disassemble shipping container by pulling off Tyvek wrap and unscrewing all screws from the protective wooden top.



### Step 2 - Remove all parts of the hunting blind:

Remove all parts, walls and the roof to expose the floor of the hunting blind. Separate all items for easy assembly.



### Step 3 - Assemble door and wall panels:

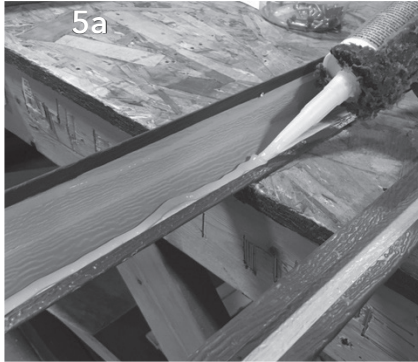
**3a)** Install the backwall panel to the hunting blind floor. Slide the backwall panel over the floor cleat ensuring that the wall sits flush with the floor, it is centered and the aluminum overhang is on the outside of the bug-guard tape. Use Caution when handling the aluminum walls as the edges can be sharp.

**3b)** Next, install the lower half wall panel with the air vent on bottom to the right side of the blind (the left and right side of blind is determined when facing the door from the outside of blind). Slide the side wall over the cleat and center on the floor. **3c)** Use a 2" black flat head screw to attach the wall in the middle into the pre-drilled hole. Slowly drive the screw drive into the lower half side wall (be careful not to crush the aluminum panel). Repeat for opposite side lower wall. **3d)** Drive (3/4") green screws evenly spaced into inside bottom half of both side walls (9 screws each wall ) and back wall (5 screws) 1 inch up from the bottom of the floor. **3e)** Caulk the seam on upper side wall and place on top of lower half wall. Use a 2" black flat head screw to attach to back wall in the top pre-drilled hole. **3f)** Drive a (3/4") green screw into the middle of the two side panels (between the window openings) and at each end (3" from the ends). Repeat for other side. **3g)** Now center the door on the floor. Ensure it is flush with the floor and with one person holding the door panel in place, fasten the door panel to the floor with the four (3") pan head screws using the four pre-drilled holes in the bottom of door panel. Do not overtighten. Install 2" black flat head screws into the top pre-drilled holes to secure the side walls to the door. **3h)** From outside of blind, drive (3/4") green screws 3/4" from bottom of wall. Evenly space 9 screws into the back wall, 11 screws into the front wall and 17 screws into each side wall.



#### Step 4 - Installing roof core panels:

Install the two-insulated roof cores in place on top of the blind over the wall cleats. You may need to loosen outside top 2" wall screws to fit in place. Make sure roof panel is flush on all four sides and fasten the side walls first with three 2" screws through the pre-drilled holes. Now secure the roof cap from the front with four 2" screws and finally the back with four 2" screws. Push down on the roof cores when driving the screws into the cores. \*Be careful not to crush the aluminum panel by over-tightening.



5a



5b



5c

#### Step 5 - Installing corner molding:

**5a)** Caulk the four corner moldings with caulk provided with a generous bead 1/4" from the side of the trim piece on both sides. **5b)** Attach corner molding flush to the bottom of the blind to and fasten with six (3/4") green screws (per side) starting from the middle to the top and then middle to the bottom in pre-drilled holes. **5c)** Push in on corner molding when driving screws to ensure corners are drawn in tight.



6a



6a



6b

#### Step 6 - Installing interior center 2" X 2" roof support board:

**6a)** Install the wooden center roof support board in the center of the ceiling fastening the 2" black flat head screws in the pre-drilled holes. Ensure that the screw connects with the roof core and draws down and that the screws do not protrude out the top of the roof core as this could puncture the aluminum roof panel when installed in step 7. **6b)** Install the two (3") flat head screws into each end of the support board through the top center pre-drilled front and back panels.

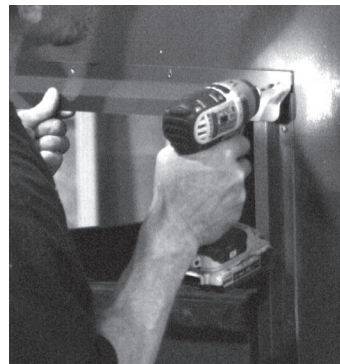
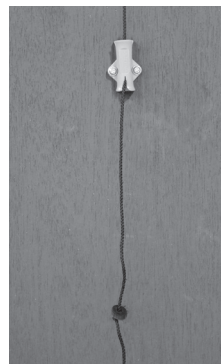


### Step 7 - Installing aluminum roof panels:

**7a)** Place the two aluminum roof caps over the top of the blind. **7b)** Once the metal roof panels are in place, slide the center connecting strip between the two tracks on the roof panels which will secure the two roof panels together. Be careful when pushing the connecting strip across the 2 panels so not to bend. Use two hands to work the connecting strip carefully across the panels from one end of the blind. Leave the same amount of overhang on each end of blind.

**7c)** Starting from the top of the roof fasten the metal roof to the walls of the blind using the (3/4") green screws. Push down on the roof cap while driving in the screws 1/2" up from the bottom of the roof edge. The 2 blind sides will use eight screws and the front and back will use six. Make sure all four corners have a screw in each side. Start in center and move to the outside.

**7d)** Bend down the overhang from the center connecting strip flush with front wall and back wall. Trim the aluminum connector so it's even or slightly past the roof cap and fasten down with two (3/4") green screws.



## Step 8 - Installing Windows (see pre-installed door window as an example):

**INSTALL THE EXTERIOR SHIELD TRACKS:** On each of the 8" sides, measure over 1-7/8" at the top and bottom corners. Be sure to mark all four spots.

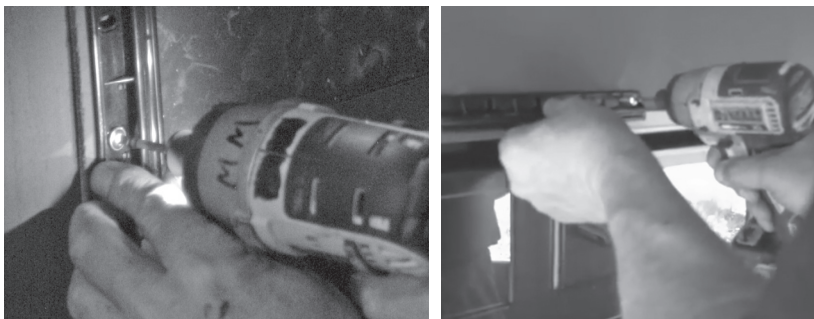
Using the marks as a guide, position the first exterior shield track along one side of the window opening. Raise the channel about 1/8" above the top of the window. Use one (3/4") green screw to hold the exterior track in place. Repeat step on the opposite side.

Make sure each track is aligned at the top and bottom of the window opening. Use a total of three (3/4") green screws to fasten each track in place.

**INSTALLING THE EXTERIOR SHIELD:** Drop the exterior shield into place behind the exterior shield tracks. The cord hole should be on the bottom of the shield.

**INSTALLING THE EXTERIOR DRIP CAP:** Begin by making guide marks 1-9/16" above the window. Secure the drip cap on the right side with one (3/4") green screw. Then, make sure the drip cap is level and rests on the marks. If so, secure with another (3/4") green screw. Use five evenly spaced (3/4") green screws to finish securing the drip cap. Use a total of five evenly spaced (3/4") green screws on the gun window to finish securing the drip cap. Use 3 on the bow window cap.

**INSTALLING THE INTERIOR DRAW CORD CINCH LOCK:** Pull the shield up and down a few times to center the cord in the window. Once you have found the center, let the shield down. Measure 15-1/2" down from the center and mark the position. Peel the tape protection off the back of the orange speed cinch and secure the top of speed cinch to your mark. Make sure you set correctly with the notch at the bottom (as shown in picture) as the tape is very aggressive and difficult to remove once adhered to wall. Secure the cinch with two (1") washer head screws. Run the cord through the speed cinch tube. Then thread the cord through the rubber shield stop. Tie a knot at the end of the cord directly beneath the rubber stop. You may need to adjust the knot to make sure the shield is at or just below the window. Note: If the shield does not slide down smoothly with cord, from the outside of blind, lightly bend out the exterior shield tracks until shield slides smoothly.



## Step 9 - INSTALLING THE INTERIOR LUAN, STRIP, TRACK AND GLASS:

Install the luan wood strip even with the side of window opening and even with the top j-channel (see pic). Use staple gun and a minimum 3/8" staple to hold in place. Slide the plastic glass tracks onto each side of glass panel firmly. Hold the glass and tracks over the window opening, making sure it is even on both sides and on top of wooden luan board strip. Using (1") washer head screws, secure one track on the right side of the window (top and bottom). On the left side of the window, place one washer head screw in the top hole of the opposite track. Lower the glass to make sure it is level and will slide smoothly. Then fasten the remaining three (1") washer head screws. Secure the half piece of glass track in the middle of the window of the side walls, back wall and door wall making sure it is even with the top of window opening. Secure with two 1" washer head screws. This will hold window in place when in upright position.



## Step 10 - Caulking:

Caulk the top of the door drip, all the corner moldings, roof corner seams and wall seams.



## 4X6 - Hunting Blind



**SUMMIT OUTDOORS**

Professional Grade Comfort

7201 Engle Road, Fort Wayne, IN 46804 • Toll Free: 1-888-446-4868 Fax: 260-483-2070

[www.shadowhunterblinds.com](http://www.shadowhunterblinds.com)